



# GAT MONTHLY MEMBERSHIP PROGRESS REPORT

Results as of: 4/30/2022

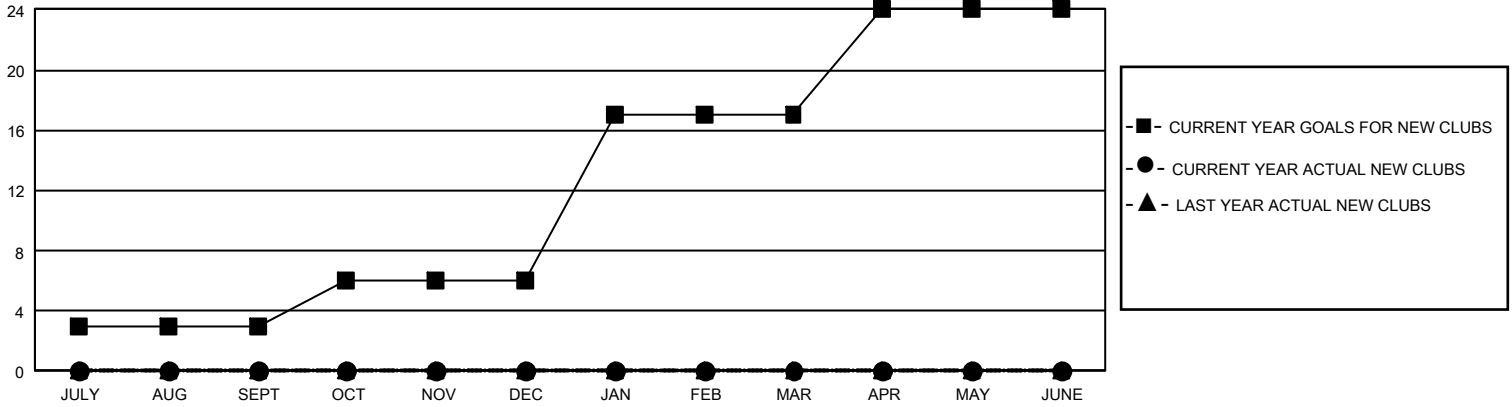
## GMT Constitutional Area 5 - J, Group I

REPORT DOES NOT INCLUDE CLUBS IN UNDISTRICTED AREAS.

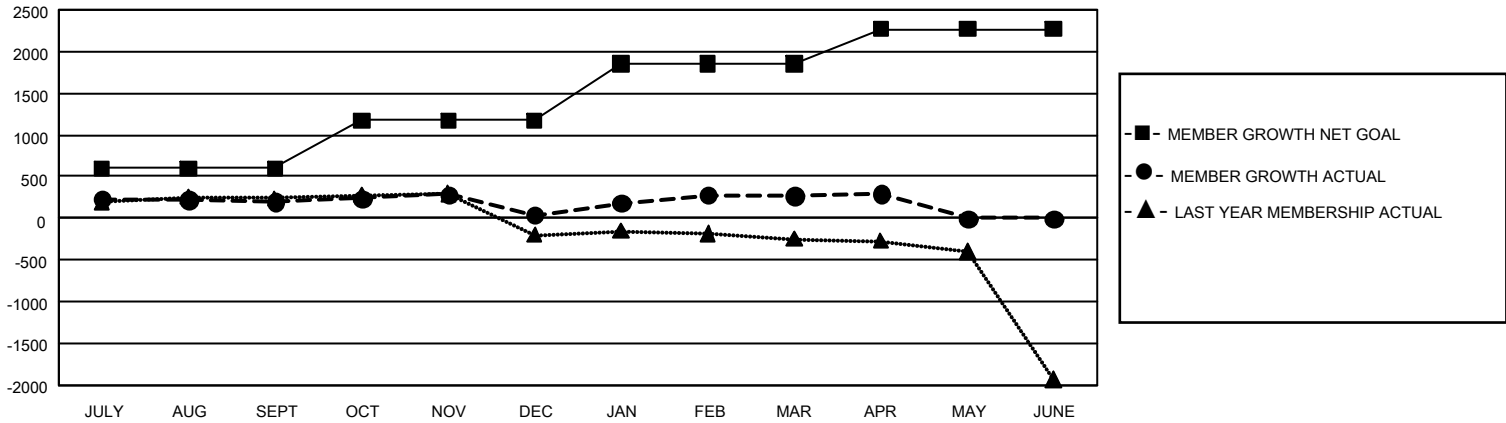
Clubs			
RESULTS FOR 2021-2022			
QUARTER	NEW CLUB GOAL	NEW CLUBS	DROPPED CLUBS
JULY/AUG/SEPT	9	0	3
OCT/NOV/DEC	9	0	2
JAN/FEB/MAR	33	0	0
APR/MAY/JUNE	21	0	1

Members			
RESULTS FOR 2021-2022			
QUARTER	MEMBER GROWTH NET GOAL	MEMBER GROWTH ACTUAL	DROPPED MEMBERS ACTUAL (including transfers)
JULY/AUG/SEPT	600	641	408
OCT/NOV/DEC	570	400	543
JAN/FEB/MAR	680	546	306
APR/MAY/JUNE	420	175	137

GOALS AND ACTUAL NEW CLUBS CUMULATIVE



GOALS AND ACTUAL MEMBERS CUMULATIVE



<b>DROPPED CLUBS: 6</b>	522 CLUBS OF 787 ADDED 1 OR MORE NEW MEMBERS	<b><u>GENDER DISTRIBUTION</u></b>	
		MALE 24,616 (74.33%)	FEMALE 8,500 (25.67%)
<b><u>DROPPED MEMBERS</u></b>		NON BINARY 0 (0.00%)	PREFER NOT TO ANSWER 0 (0.00%)
DECEASED 222	<a href="#">CLICK HERE FOR CUMULATIVE MEMBERSHIP DATA</a>	TOTAL FAMILY UNIT MEMBERS 13,482	
CLUB CANCELLED 0		FAMILY MEMBERS PAYING HALF DUES 7,363	
OTHER 1,172			
<b>TOTAL 1,394</b>			